

OXFORD1EARTH
Create. Build. Sustain.

studio
HAUS

501, Kensington Court, Lane No. 5, Off North Main Road,
Koregaon Park, Pune - 411 001.

+91-7507 377 777 | www.oxford1earth.com

Disclaimer: The Information provided in this brochure is neither an offer nor a binding contract and the content mentioned herein is presented to best of our knowledge. Some of the pictures and specifications have been used for representational purpose and represent an Architect's impression of the development. The Developer has the right to make additions, alterations or amendments to the layout, locations, plans, elevations, specifications, floors, facilities, amenities, material, fittings, features, without any notice and makes no warranty, representation or undertaking whether expressed or implied, nor assumes any legal liability, whether direct or indirect, or responsibility for the accuracy, completeness, or usefulness of any information in this brochure/promotional document.

BOLD.
MODERN.
UNIQUE.
DESIGN.
ORIGINAL.
VIBRANT.
LUXURY.
INDIVIDUALISTIC.
FRESH.
LANDSCAPES.
OPEN.
VERDANT.
STYLE.

FLORIDA
**WATER
COLOR**
RESIDENCES

2 AND 3 BEDROOM RESIDENCES
KESHAV NAGAR, MUNDHWA

FLORIDA
**WATER
COLOR**
RESIDENCES

**2 AND 3 BEDROOM RESIDENCES
KESHAV NAGAR, MUNDHWA**

OUR JOURNEY SO FAR

RESIDENTIAL

OXFORD VILLAGE

WANOWRIE, PUNE

OXFORD PREMIUMS

WANOWRIE, PUNE

OXFORD BLUES

WANOWRIE, PUNE

OXFORD ELEGANCE

WANOWRIE, PUNE

WINDSOR AVENUE

WANOWRIE, PUNE

1 MODI BAUG

SHIVAJI NAGAR, PUNE

10 KASTURKUNJ

BHOSALE NAGAR, PUNE

OXFORD HALLMARK

KOREGAON PARK, PUNE

OXFORD PARADISE I

SUS-PUNE

6 PRABHAT

PRABHAT ROAD, PUNE

FLORIDA ESTATE

MUNDHWA, PUNE

FLORIDA MINIS

MUNDHWA, PUNE

OXFORD AVENUE

PIRANGUT, PUNE

UTTAM TOWER

KALYANI NAGAR, PUNE

SPRINGFIELD PARK

WANOWRIE, PUNE

FLORIDA RIVER BANK

KESHAV NAGAR, PUNE

RESIDENTIAL ON-GOING

FLORIDA WATERCOLOR

KESHAV NAGAR, PUNE

FLORIDA RIVERWALK

KESHAV NAGAR, PUNE

FLORIDA HILLS

NIBM ROAD, PUNE

THE RESIDENCES

BAVDHAN, PUNE

OXFORD PARADISE II

SUS-PUNE

HOSPITALITY

O HOTEL PUNE

KOREGAON PARK, PUNE

O HOTEL GOA

BARDEZ, GOA

OXFORD GOLF RESORT

BAVDHAN, PUNE

OXFORD GROUP

A Promise!

With a legacy of 28 years, the Oxford Group has delivered over 7 million square feet of Real Estate, in addition to having diversified business interests across the verticals of Hospitality, Aviation and Leisure.



1Earth, a unit of the Oxford Group builds futuristic living concept homes. The cornerstone of our approach to work is the principle of innovativeness. We make future-ready homes; residences that reflect modern lifestyles. We specialise in building quality projects with premium apartments that are contemporary and stylish, Oxford 1Earth believes in the philosophy of optimised use of space, smart design and ensuring customer satisfaction at every stage.

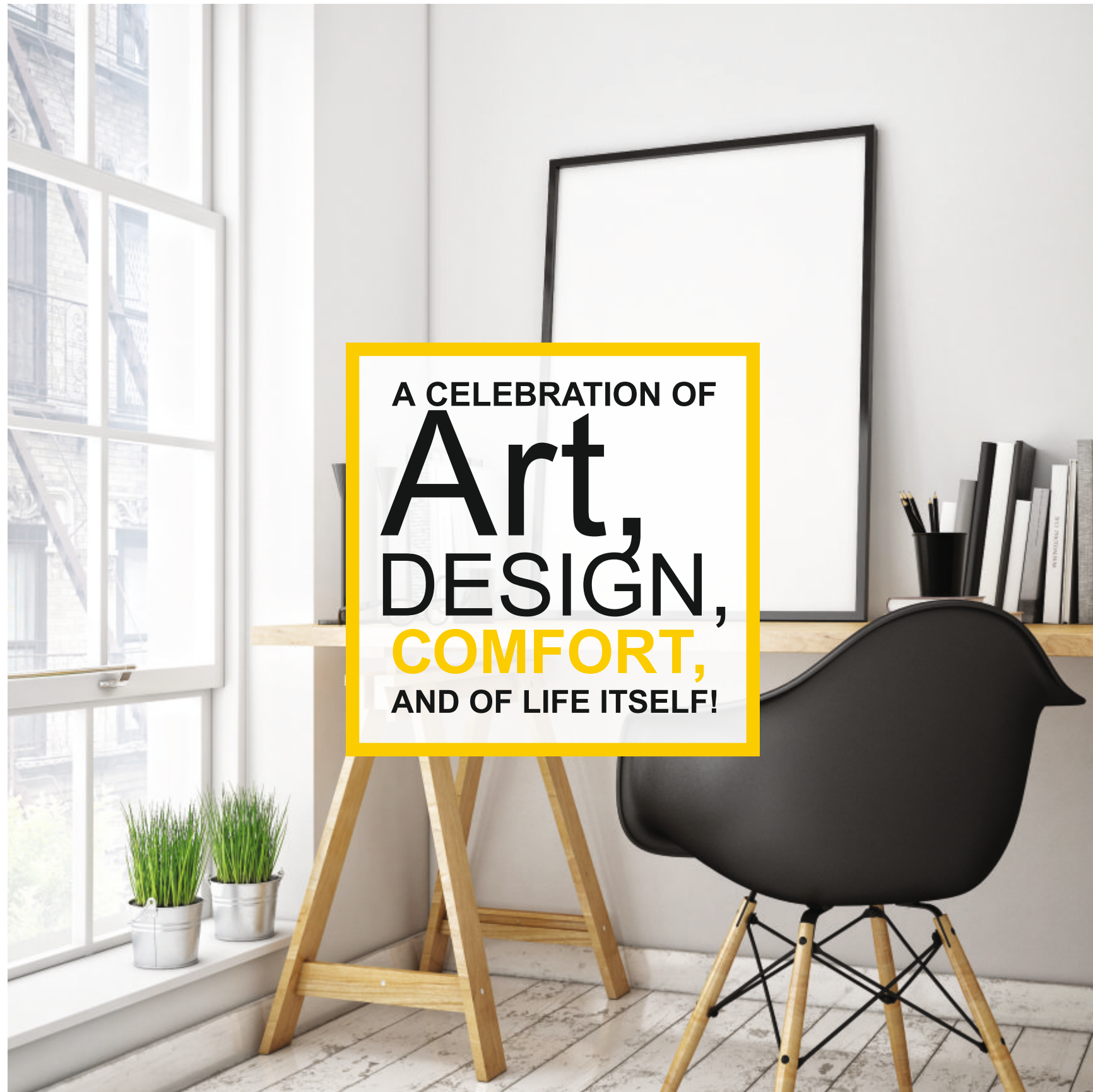


Photo for representational purpose only



Florida WaterColor, as the name suggests, is an architectural tribute to a life that colourful, A sense of playfulness and carefreeness permeates through the grounds of Florida Water Color.

Designed by **StudioHAUS**, Florida Watercolor, rests firmly on a foundation of strong design, ethical construction practices, green values and the need to accommodate all formats of family life.

Florida Watercolor is conceptualised to be a verdant and vibrant paradise near the river, with all the comforts and trappings that modern-day technology affords.



Architectural Rendition

AN ARCHITECTURAL
TRIBUTE TO A LIFE
THAT IS

COLORFUL.

PUNE'S MOST FUTURE-READY HOMES



Architectural Rendition

DESIGN THAT SPEAKS OF A **PROGRESSIVE MINDSET AND** REPRESENTS A **CONTEMPORARY** **LIFESTYLE.**

FUTURE-READY HOMES &
RESIDENCES THAT REFLECT MODERN LIFESTYLES.

Reflecting the essence of the company, Florida WaterColor will offer Specifications & Amenities that are young, contemporary, and connected. From home automation and automated door lock and video phone to high-speed internet access in every apartment, residents at Florida Watercolor will experience the glorious ease of modern living every day.

With fun and fashionable amenities like a modern café with a wifi-enabled workspace and library, a bicycle fleet, and a media centre with satellite TV that allows you to watch movies, Florida WaterColor is the hip and Ultra-comfortable apartment complex Modern Pune has been asking for.

UNIQUELY YOURS

SPECIFICATIONS



Actual Apartment Photo

THIS PROJECT IS CONCEIVED TO BRING COLOUR INTO ITS RESIDENTS' LIVES.

IT'S PACKED WITH COMFORTS AND LITTLE LUXURIES THAT PROMISE TO DELIGHT.

- MODULAR KITCHEN WITH CABINETS, ISLAND DINING, HOB & CHIMNEY
- FLOORINGS & WALLS WITH A COMBINATION OF HIGH-END VITRIFIED TILES AND WOODEN LAMINATE
- DESIGNER WASHROOM WITH LUXURY FITTINGS, GLASS PARTITION & WARDROBE IN MASTER BATHROOM
- FLOOR-TO-CEILING GLASS WINDOWS FOR UNCOMPROMISED VIEW
- HIGH SPEED INTERNET ACCESS
- HOME AUTOMATION WITH PERSONAL VOICE CONTROL OPTION
- KEYLESS AUTOMATED DOORS & VIDEO DOOR CAMERA
- AIR CONDITIONED HOMES



BRIGHT LIGHTS AND SILVER LININGS

FACILITIES

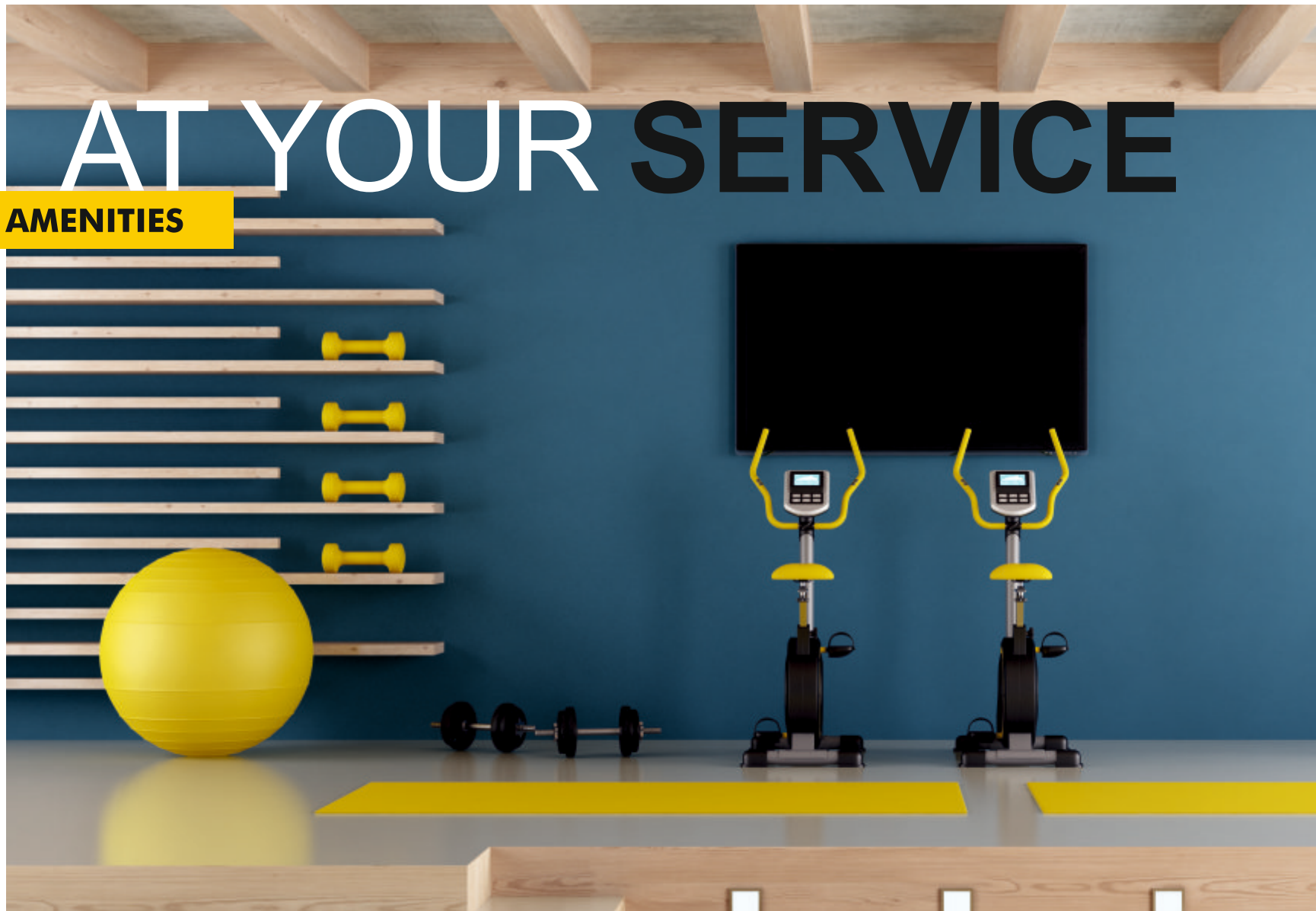
WATERCOLOR IS A BEAUTIFUL TESTAMENT TO MODERN ARCHITECTURE.

IT FEATURES STRIKING LED LIGHTING AND COLOURED GLASS
THAT COME TOGETHER TO STUNNING EFFECT.

- 100 PERCENT POWER BACK-UP (EXCLUDING AIR CONDITIONERS)
- CAR CHARGING FACILITY
- CONCIERGE DESK
- PROPERTY MANAGEMENT
 - ALL PREMISES INCLUDING SECURITY, HOUSEKEEPING, GARDENING AND MAINTENANCE TO BE PROFESSIONALLY MANAGED
- PIPED GAS

AT YOUR SERVICE

AMENITIES



WATER COLOR IS FRESH AND CONTEMPORARY.

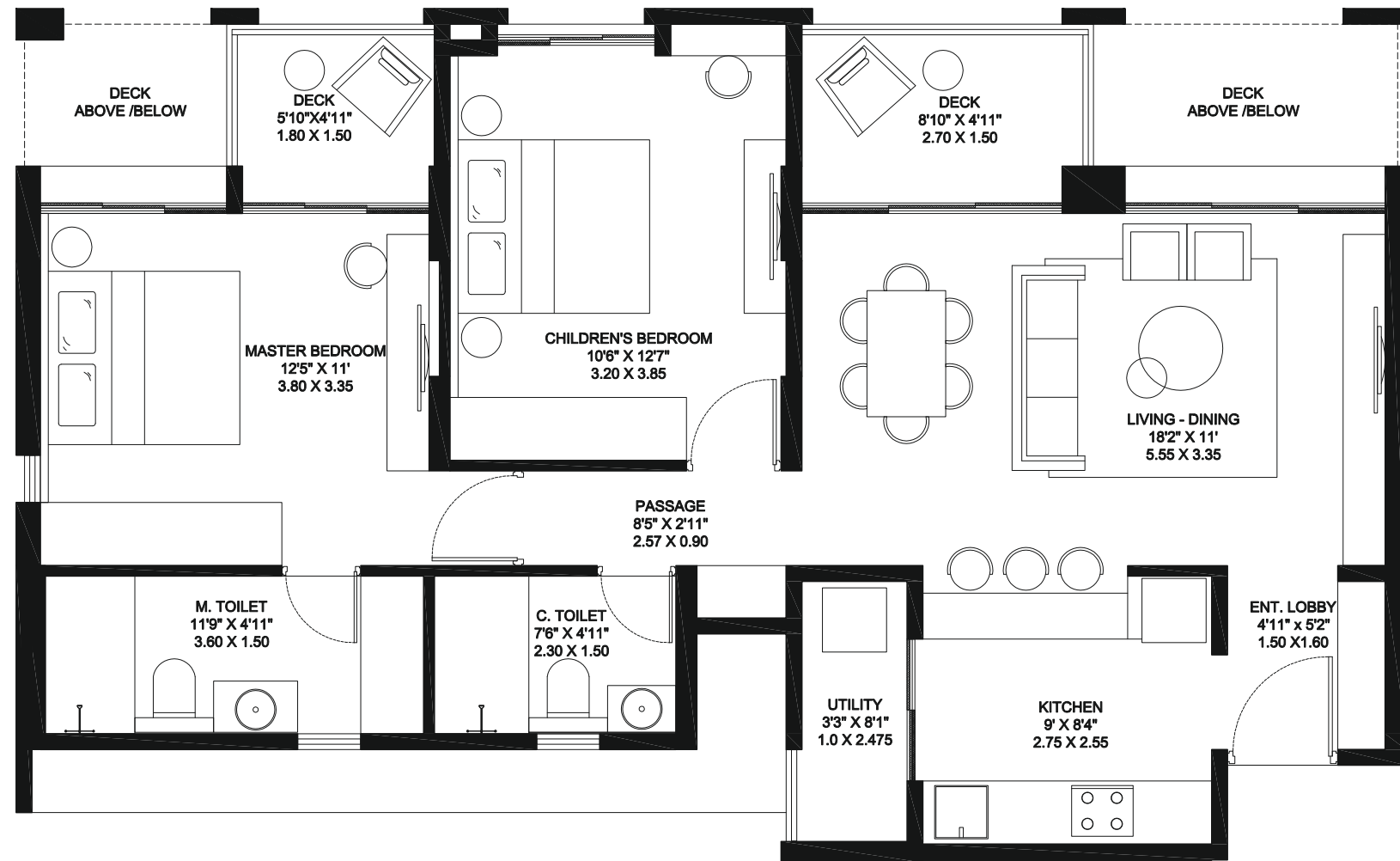
IT CATERS TO THE URBAN YOUTH AND EACH AMENITY HAS BEEN CAREFULLY CURATED AND HAND-PICKED TO MATCH THE SENSIBILITIES OF AN AUDIENCE THAT APPRECIATES THE IMPORTANCE OF QUALITY OVER QUANTITY.

- CONTEMPORARY CLUB HOUSE
- HIGH-TECH FUNCTIONAL GYMNASIUM
- SWIMMING POOL WITH DECK
- KIDS PLAY AREA WITH ARTIFICIAL TURF
- PARTY LAWN WITH BARBECUE FACILITY
- MINI PET GARDEN
- AMERICAN STYLE GAMING AREA
- BICYCLE FLEET

TOWER - B
2 BHK APARTMENT

ODD FLOOR PLAN

Total Carpet Area: 858 sq.ft.



TOWER - B
2 BHK APARTMENT

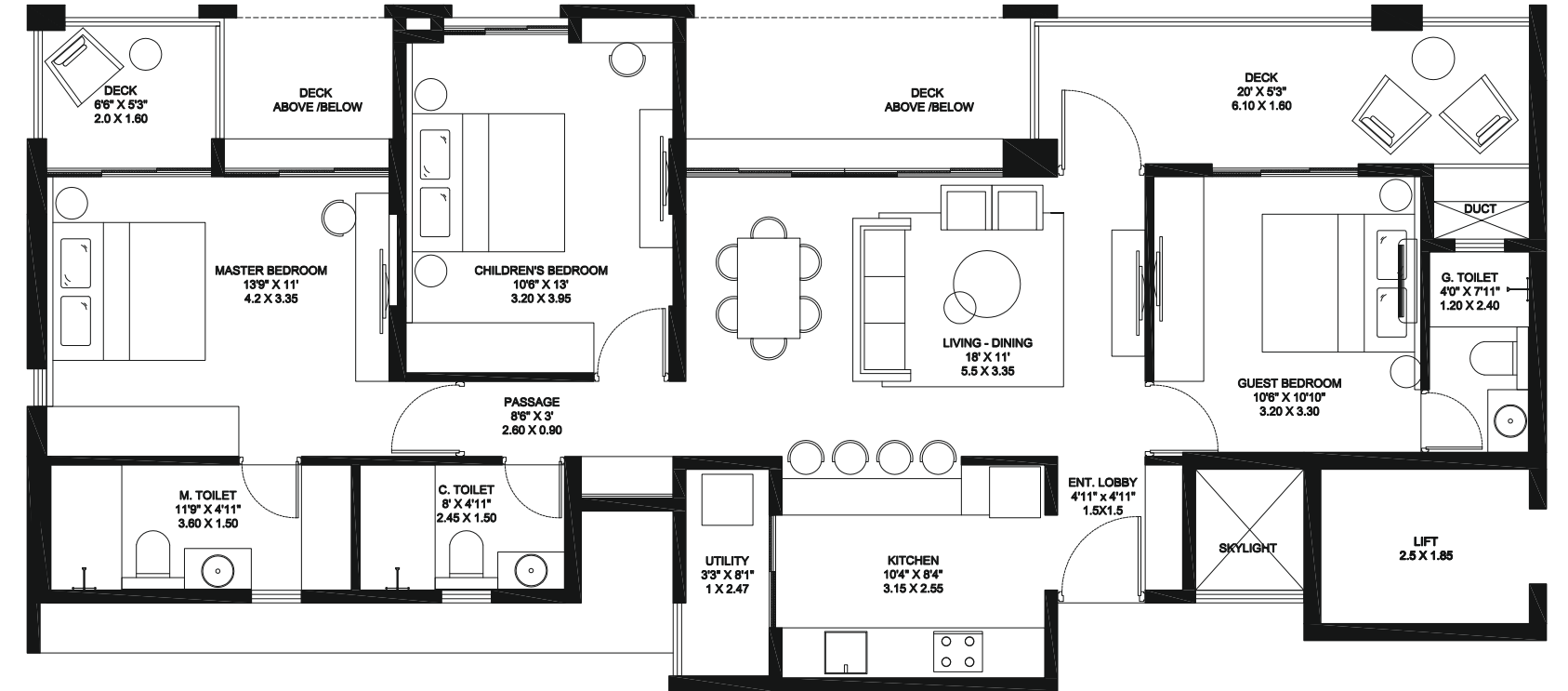
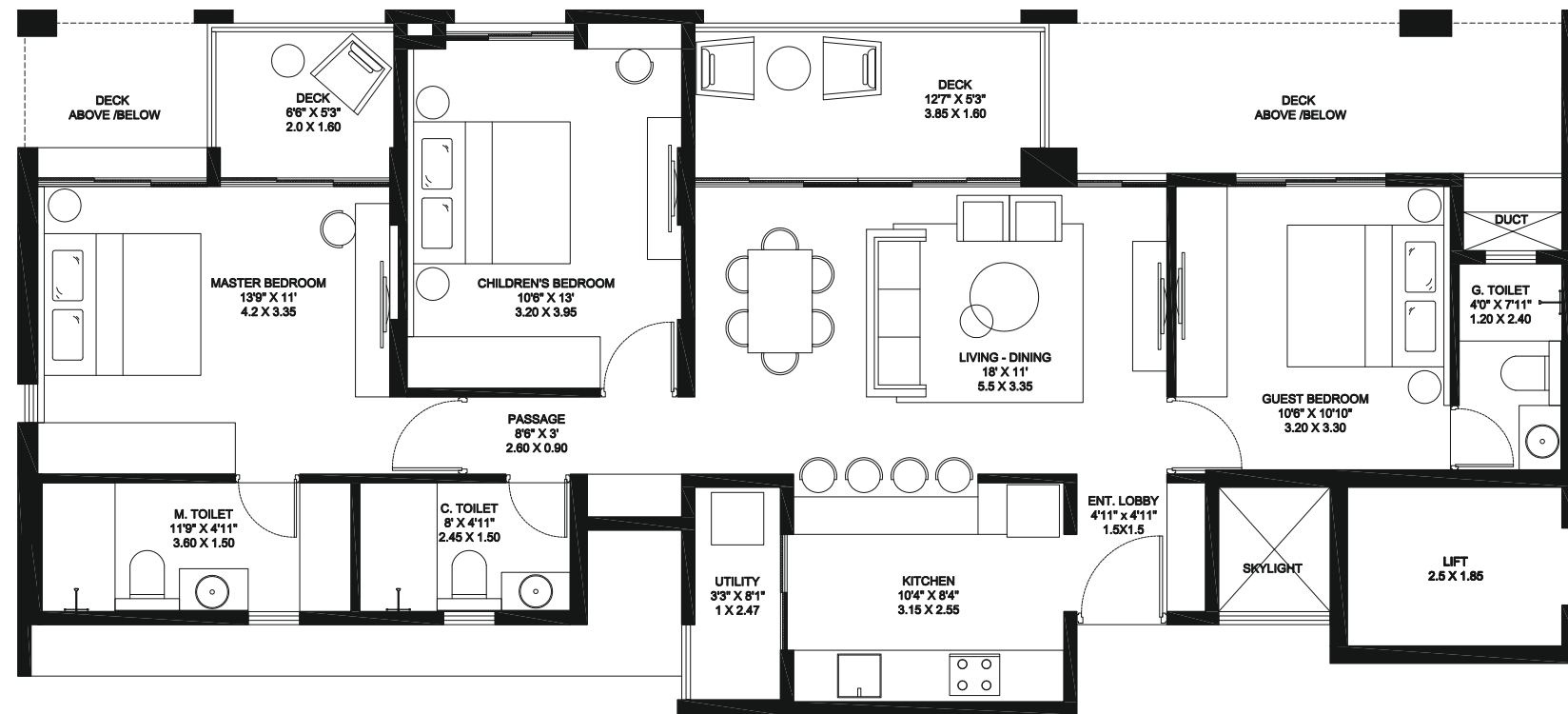
EVEN FLOOR PLAN

Total Carpet Area: 858 sq.ft.

TOWER - A
3 BHK APARTMENT

ODD FLOOR PLAN

Total Carpet Area: 1072 sq.ft.

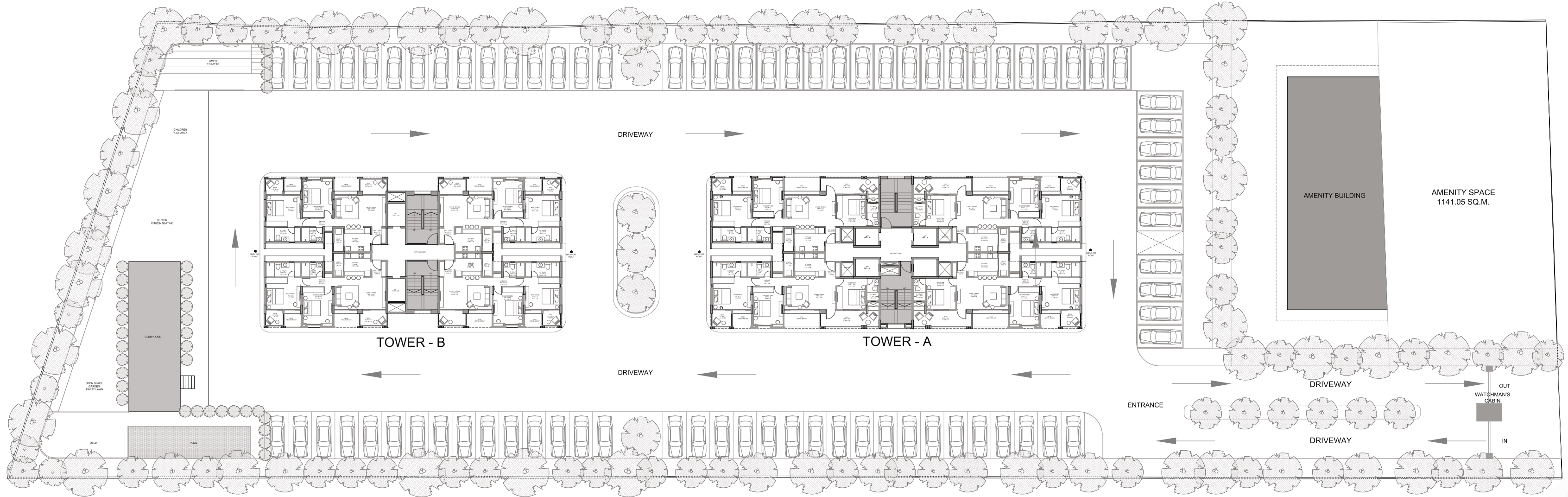


TOWER - A
3 BHK APARTMENT

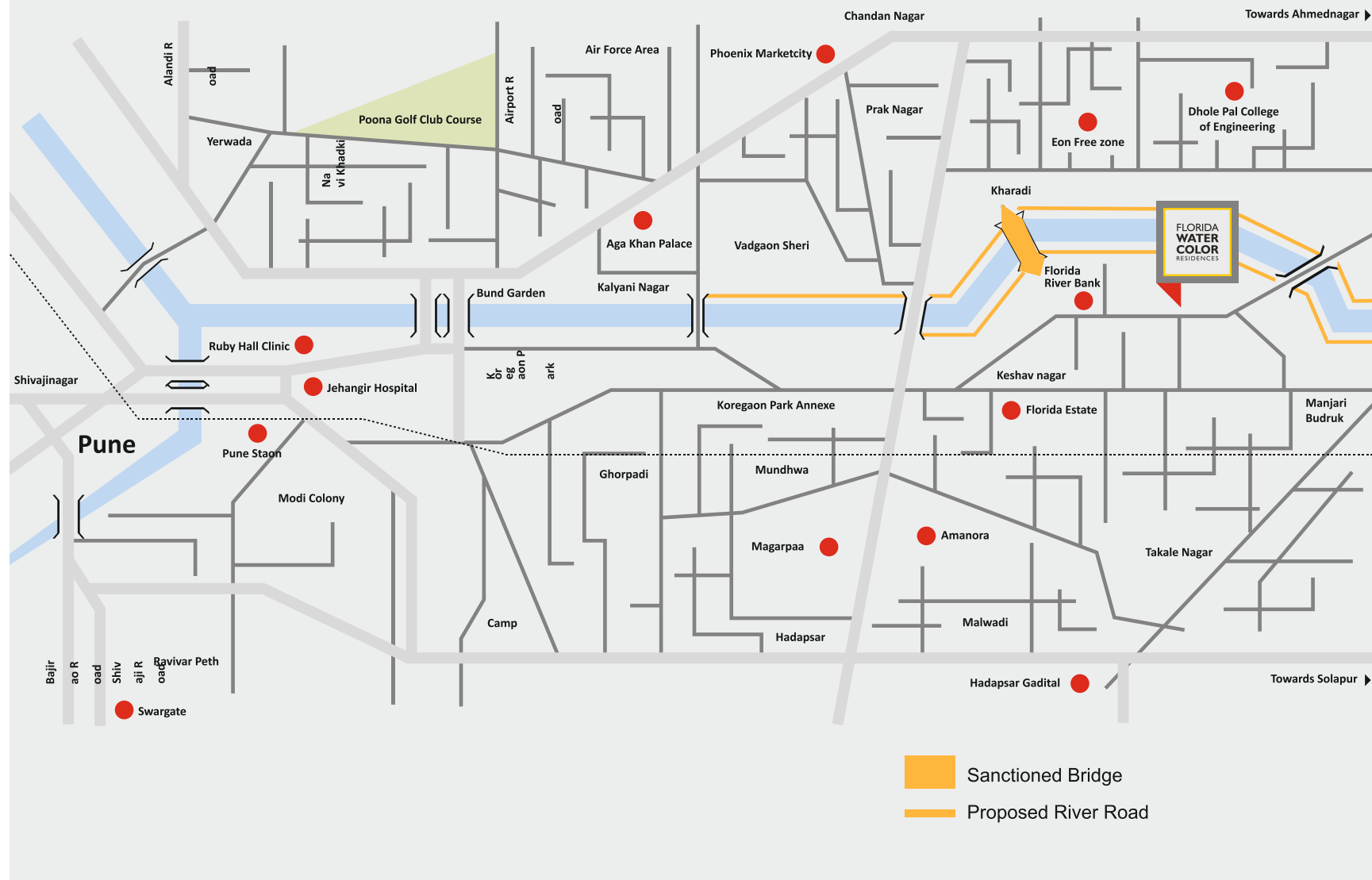
EVEN FLOOR PLAN

Total Carpet Area: 1114 sq.ft.

PROJECT LAYOUT

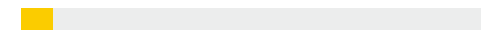


WHERE ARE WE LOCATED?

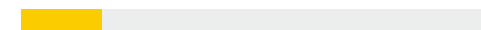


NEIGHBOURHOOD

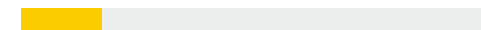
Bus Stand 1.0 Km



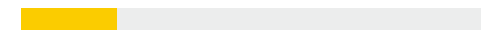
International School 2.5 Km



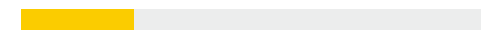
Magarpatta 2.5 Km



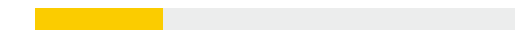
Hospital 3.0 Km



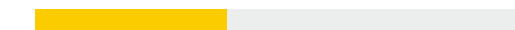
Kharadi Eon IT 3.5 Km



Koregaon Park 4 Km



Kalyani Nagar 6 Km



Pune Airport 7 Km



Railway Station 8.2 Km



National Highway 12 Km



CREDITS

ARCHITECT
STUDIO HAUS

LIASON
SUBHA

DEVELOPER
OXFORD1EARTH

LANDSCAPE
STUDIO HAUS

RCC STRUCTURE
AXIS STRUCTURAL

RERA Numbers

Phase I – Tower B: P52100000870
Phase II – Tower A : P52100000946